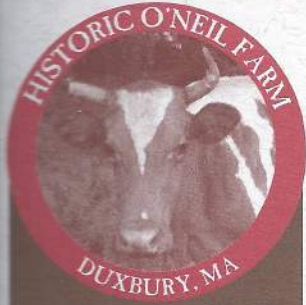


Historic O'Neil Farm, Inc.
PO Box 2755
Duxbury, MA 02331

Nonprofit Org.
U.S. Postage
PAID
Duxbury, MA
Permit No. 6

Address Service Requested



See inside for:

Connor Allen's
Eagle Scout Project

Lisa Whalen
Education Coordinator

Farm Day 2015

Bay Farm Montessori
7th and 8th Grade Program

Join Us for Farm Day 2015
~ Saturday, September 19, 2015 ~

2015 Annual Fund Continues to Support the Farm

All year long your donations are most welcome. They assist Historic O'Neil Farm programs to expand, the infrastructure to improve and historic research to reveal new and interesting facts about dairying on the South Shore of Massachusetts. Donations to date have funded important additions to our educational programs - a program shed, a cow shelter, our own hay wagon, and a new Education Coordinator position. Thank you for your generosity. Using the adjacent form, donations may be mailed to **PO Box 2755, Duxbury, MA 02331** or you can make an online donation at www.historiconeilfarm.org/donate.

Thank you



YES, I am committed to helping Historic O'Neil Farm, Inc. move into the future.

Enclosed is my contribution of:

\$50 \$100 \$250 \$500 Other

Name: _____

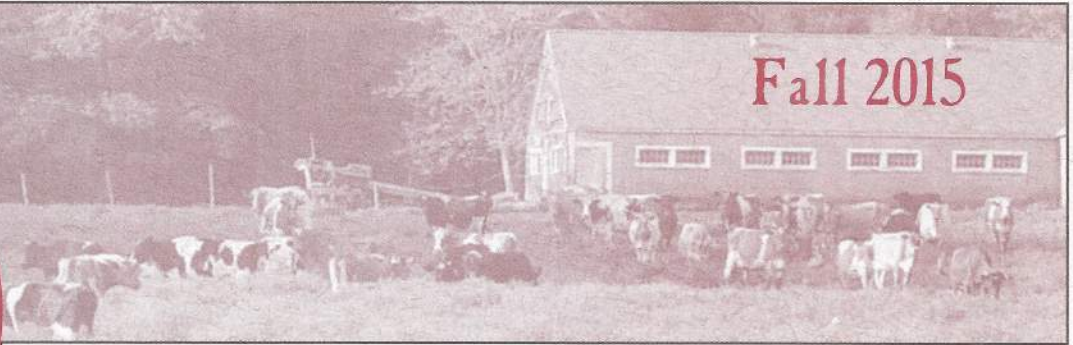
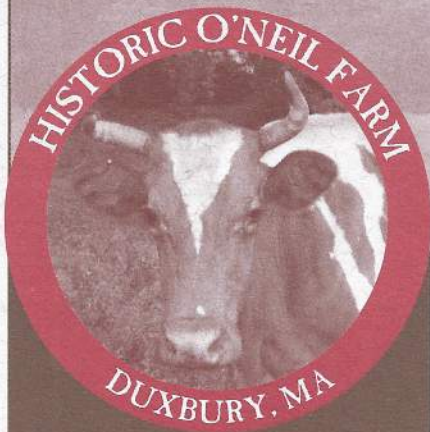
Address: _____

email: _____

THANK YOU!

Newsletter updates donated by Cherry Bishop Design
Visit my website: www.cherrybishopdesign.com

Fall 2015



History of the O'Neil Farm

As we continue to research and document the history of Historic O'Neil Farm, its land and buildings and the families who lived in the farmhouse, anecdotes provided by Carl O'Neil and his sister Barbara, deed research performed by Robert Dente in 2007, local newspapers and resources in the Duxbury and Plymouth libraries have given us glimpses into life on the O'Neil Farm over the generations. Here is a sampling of what we are learning:

- The historic O'Neil farmhouse was built circa 1720. Recommended for submission to the National Register of Historic Places, the Massachusetts Historical Commission described the farmhouse as having "significant associations with the agricultural history of Duxbury for nearly three centuries, and is a well-preserved example of rural architecture that has evolved over time."
- Historic O'Neil Farm has connections to Edmund Chandler, one of Duxbury's early settlers. Carl O'Neil is descended from Edmund who was documented as a Plymouth Colony freeman in 1633 and was involved in Duxbury land transactions as early as 1634. In 1715, Edmund's grandson, Joseph Chandler purchased what is now Historic O'Neil Farm property.
- In the 1890s, Horatio Chandler, son of Nathaniel Lewis Chandler and husband of Rosamond Avery, owned the Autumn Avenue portion of Historic O'Neil Farm. According to an 1897 biography, Horatio was successful in agriculture, manufacturing and fish culture. He had 120 acres under cultivation as well as a "trout hatchery on his farm, beginning with 10,000 trout fry." We assume the hatchery was in Hall's Brook.
- Ebenezer Avery purchased the Winter Street homestead in 1866 and expanded the farm through subsequent purchases. With the marriage of his daughter Rosamond to Horatio Chandler, the Autumn Avenue and Winter Street parcels were joined representing the current Historic O'Neil farmland, most of which was part of Rosamond's estate upon her death in 1913. The Avery name was well known in Plymouth County as Rosamond's brother, Winslow, owned the Old Colony newspaper from 1870 through the 1880s and his descendants were large dairy farmers in Plymouth. Read more at www.historiconeilfarm.org>History>Research-the-history-of-the-oneil-farm>"The Avery Family Comes to Duxbury".
- Horatio Chandler's son-in-law, Edward S. O'Neil and his son Horatio expanded the Historic O'Neil Farm barn and dairy in the 1920s. Called the Homestead Farm at the time, the O'Neil dairy was a producer for the Avery family's Nook Farm Dairy in Plymouth. The picture below shows the O'Neil children's Guernseys from Avery Farms, Plymouth, MA – Carl with yearling 'Avery Farm Prudence,' Edward with yearling 'Avery Farm Buttercup,' and in the background is Barbara's cow 'Avery Farm Dawn.'

Research also uncovers a rich civic tradition among those who worked and lived on Historic O'Neil Farm. A few examples include: James T. O'Neil as Duxbury's first Police Chief,

Edward S. O'Neil as Superintendent of Roads, Horatio Chandler as Surveyor of Highways, Carl's mother, Alice, as a Duxbury school teacher and Carl, as Fire Chief. Carl remembers that during his childhood, the Duxbury fire engine was stored in the right side of the barn.

The history of the Historic O'Neil Farm reaches back into the earliest settlement of Duxbury and continues on to the present day. It is our intention to research, to preserve and expand this important story into the future.

Carl and Edward O'Neil
with Their Guernsey Yearlings



The Historic O'Neil Farm, Inc. is a private, non-profit corporation committed to maintaining the 145-acre farm in agriculture in perpetuity, preserving and protecting the historic landscape and natural habitat, providing educational programs, and offering public access to the farm.

Board of Directors

Susan Schortmann, President

Pat Loring, Treasurer

Sam Butcher, Clerk

Kimberly Glattstein

Jerry Ingersoll

Marie King

Douglas Muir, Esq.

Carl O'Neil

Prudence Pease

Historic O'Neil Farm, Inc.

PO Box 2755

Duxbury, MA 02331

email:

historiconeilfarm@gmail.com

website: historiconeilfarm.org

Find Us on Facebook: 

The Autumn Avenue trailhead parking lot is open dawn to dusk.

Connor Allen's Eagle Scout Project



Connor Allen and Carl O'Neil

Connor Allen of Duxbury's Boy Scout Troop 62 recently completed his Eagle Scout Project at Historic O'Neil Farm: the repair and reconstruction of a lean-to structure next to the farm's dairy barn. His work, the culmination of many years as a Boy Scout, is a significant contribution to the

continued improvement of the farm's infrastructure.

Connor's work at the farm included rafter repair, installation of a new roof, repair of a barn wall, replacement of structural posts and repair of a hole in the adjacent barn. The project also included the construction of custom-made removable gates so that farm animals can be kept beneath the lean-to on a temporary basis. Connor estimated the team spent 186 total man-hours on the project, but his work was not limited to the on-farm construction. Connor also spent significant time soliciting contributions of materials from local merchants, providing project information to the farm, merchants, his troop and others, as well as organizing all of the volunteers who helped him with the project.

Sue Schortmann, President of the Board of Directors of the Historic O'Neil Farm said "We have had lots of Scouts propose projects at the farm, but Connor has raised the bar. I am very impressed." Carl O'Neil complimented Connor and his crew saying "The work was excellent and is a big help to the farm!" Connor commented that during his construction work he could see some of the curious calves monitoring his progress. He was happy to see that they have a nice new space to relax in.

The Historic O'Neil Farm, Inc. Board of Directors thanks Connor for his excellent work and is grateful for his dedication and effort. The Board also thanks Lowes of Kingston, Home Depot of Plymouth, Home Depot of Quincy, Goodrich Lumber and Allen Construction for their contributions of materials for Connor's Eagle Scout Project. The Board congratulates Connor on becoming an Eagle Scout. It is a well-deserved honor.



Lean-To Custom Removable Gates Built by Connor

Lisa Whalen, Education Coordinator

To all who contributed to our 2015 Annual Fund Appeal we send a big, "THANK YOU".

Lisa Whalen, our new Education Coordinator funded by the Annual Appeal, hit the ground running when she began work this spring.

Providing increased agricultural education and greater public access to the farm for both children and adults has been at the forefront of Lisa's work. Children from Hope Christian Academy toured the farm and enjoyed hands-on time with the calves. Young adults from Brewster's Latham Center and adults from Duxbury's Senior Center have also visited and learned about the farm's dairy herd. In June, a calf was taken to **Duxbury Days** at the Alden House Museum, and homeschoolers and preschoolers have enjoyed tours of the barnyard as they learn about dairying on the South Shore. Lisa and Sue Schortmann, President of the Farm's Board of Directors, held two Walks and Talks open to the public, three "Day at the Dairy" programs for 7 to 12 year olds and hosted a preschool program for 20 preschoolers. The farm has been a very busy place this summer, thanks to Lisa with her background in both education and cattle handling. In addition, Lisa brings copywriting experience to the job, where she has revised the farm's event display board and trail map. We are grateful to have Lisa as part of the team welcoming visitors to Historic O'Neil Farm, where learning about dairying is fun.

Join us in the fall for a Walk and Talk on Sunday, October 4, at 1:30 pm. This is a free program open to all ages.

Pre-register to let us know you are coming.

www.historiconeilfarm.org/walkandtalk.html

For more information about our programs and to schedule a farm visit, log-on to: www.historiconeilfarm.org.



Lisa Whalen with the Jr. Friends Dairy Days Program. How Much Strength Does It Take to Carry a Hay Bale?



Farm Day 2015 Hosts the Duxbury Food and Wine Festival's Food for Thought Fair



September 19, 2015 from 11am - 3pm



Historic O'Neil Farm and Food for Thought from the Duxbury Food and Wine Festival are teaming up at Farm Day 2015 to bring you more activities, more agricultural tables and more fun.



Activities you always enjoy at Farm Day will continue as usual – milking demonstrations, 4-H members with their calves, barn tours, old fashioned children's games, face painting and crafts and Cabot Cheese samples. New this year will be farmer's market vendors, food trucks and lots of fun information about where our food comes from.



Please join us for the fun. Parking is in our Autumn Avenue field where you can ride the hay wagon, walk through the pastures or walk our woodland trails to the barnyard.



You may visit www.duxburyfoodandwinefestival.com or the www.historiconeilfarm.org websites for more information. We hope to see you there!



Interested in receiving email updates
of events and news? - Sign-up at:
www.historiconeilfarm.org/enews.html



Montessori Academy 7th and 8th Grade Visit

Nine Bay Farm Montessori Academy 7th and 8th graders visited Historic O'Neil Farm in April and May for a two-part program. From one visit to the next, students were able to chart the growth of Twinkie, one of the farm's new calves. She gained nearly 40 pounds in one month – which is healthy if you are a four-month old Guernsey calf. Using a calf weight tape was only one of several student activities; the hands-down favorites were making ice cream and being with the calves.



Recently Completed Manure Storage Facility



Holsteins Grazing in an Historic O'Neil Farm Pasture



Bay Farm Montessori Academy 7th and 8th Graders