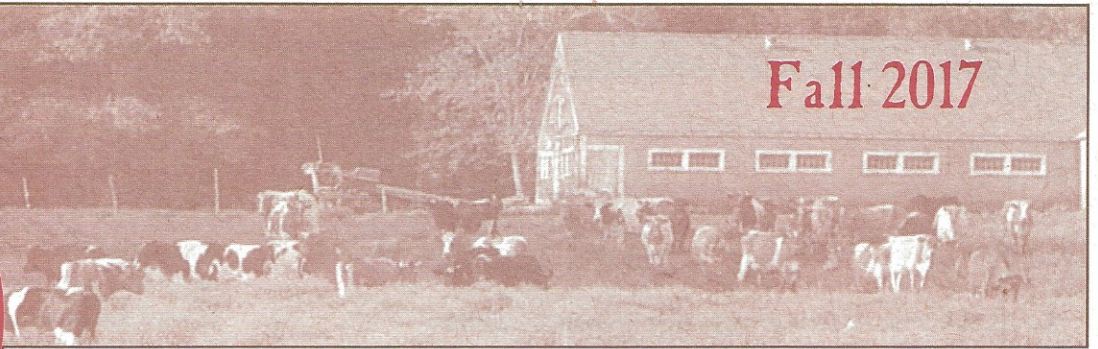
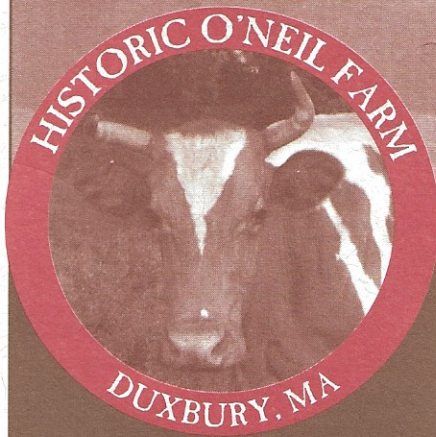


Fall 2017



Thank You to Board Member Pat Loring for Her 15 Years of Commitment and Dedication to the Preservation of Historic O'Neil Farm

The Historic O'Neil Farm, Inc. is a private, non-profit corporation committed to maintaining the 145-acre farm in agriculture in perpetuity, preserving and protecting the historic landscape and natural habitat, providing educational programs, and offering public access to the farm.

Board of Directors
Susan Schortmann,
President
and Acting Treasurer
Sam Butcher, Clerk
Kimberly Glattstein
Jerry Ingersoll
Marie King
Douglas Muir, Esq.
Carl O'Neil

Historic O'Neil Farm, Inc.
PO Box 2755
Duxbury, MA 02331

email:

historiconeilfarm@gmail.com

website: historiconeilfarm.org

Find Us on Facebook:



The Autumn Avenue trailhead parking lot is open dawn to dusk.

After tirelessly working for 5 years to permanently protect the O'Neil farm and over 10 years as a board member and treasurer for Historic O'Neil Farm since its founding Pat Loring has resigned. The board is grateful for her devoted leadership and service.

Pat was on the Duxbury Community Preservation Committee and the Wildlands Trust board when the opportunity arose for the town to partner with the Trust to save the O'Neil farm in its entirety and keep it a working farm. Pat was the driving force and mastermind in creating a unique partnership between the town, the Trust and the O'Neil family, particularly Carl O'Neil. This partnership not only was hugely successful in saving the farm, but created a powerful public relations campaign of wooden cows that sprouted all over town. Pat brokered the preservation restrictions that protect the farm and the land, researched and garnered grants that helped offset the costs, and in turn her efforts and the success of the O'Neil farm protection has spawned land preservation forming a true "Farm Belt" of working agricultural elements in West Duxbury that today are a living aspect to Duxburys' agricultural past.

During the last ten years Pat contributed to the planning, organizing, and leading of our Annual Farm Day, organized and volunteered countless hours with programs like "Walks and Talks" and various open house events like "Artists on the Farm" and tours of all ages. Pat was instrumental in moving the agenda with a consistent focus on our mission to promote public awareness of the critical importance of sustainable agriculture through providing public access, programming, and implementing improvements. Pat was the author of many of the HOF articles and newsletters, instrumental in establishing the 2 HOF trails, initiated planning and improvement discussions, handled all financial transactions, and garnered volunteer support.



"Thank you, Pat, for tirelessly working year round for years. Your love and respect for the O'Neil Farm and Duxbury's working farms has yielded a truly bountiful harvest that we all can enjoy forever." Historic O'Neil Farm board members: Kim, Sue, Sam, Doug, Marie, Carl, and Jerry.

Switchel An Old Fashioned Drink

An Old-Fashioned Drink Regaining Popularity among the health-conscious.

Carl and our board member Marie recollect a popular homemade drink that would be a refreshing treat after a hot summer hay harvesting day. Since the 18th century, Switchel was a popular summer drink for thirsty farmers.

It was made from cool well water, sweetened with maple syrup or molasses, mixed (and fermented) with apple cider or plain vinegar, and seasoned with ginger. Farmers carried around the jugs of switchel throughout the day to stay energized and hydrated. Switchel was a good substitute for the cool well water that would upset their stomach if they drank too much of it too fast on the hot harvesting days.

With the popularity fermented drinks like kombucha and the health benefits of apple cider vinegar - Switchel is being resurrected as an alternative drink choice among the health conscious.

On the internet you can find many variations of the Switchel recipe.

Here is a recipe from Farmer's Almanac.

Switchel or "Haymaker's Punch"

- 1 cup water
 - 1 tablespoon apple cider vinegar
 - 2 teaspoons molasses or maple syrup
 - 1/4 teaspoon ground ginger or 1 tsp grated fresh
- Combine the ingredients in a jar and shake.

Enjoy.



Reflections on the Past 10 Years

As we approach our tenth farm day, I reflect on where the farm was 10 years ago when we first reopened our doors to the public as Historic O'Neil Farm. It brings all of the blessings the annual fund has brought us to light, as well as the tireless work of many volunteers! The first thing people do when they arrive for Farm Day is ride up in the beautiful hay wagon purchased a few years ago from Pennsylvania. The hay wagon allows for a safe and comfortable ride across a pasture and up to the farm. What better introduction to the farm than a ride in a hay wagon pulled by a tractor! In our barnyard, you may notice the moveable cow shed and our education shed, also annual fund purchases.

Also in the barnyard you may notice the chicken coop constructed last year by Eagle Scout Jared Zack. This coop is only the most recent and most visible of many Eagle Scout projects completed at the farm. Others include the new shed roof off the back of the barn built by Connor Allen, the Autumn Avenue parking lot renovation completed years ago by Graham Groombridge and then refurbished by Brendan Sarles, Tom Sarles who rebuilt the Autumn Avenue stone Walls. Even our woods trails have benefitted from the scouts hard work with projects including the Halls Brook bridge as well as many wooden planks built, and the cellar hole clean out.

Our all-volunteer board has also been busy getting grants, that helped us build a manure storage facility and a wastewater bark mulch system, both of which reflect our commitment to improving the farm's infrastructure. Two grants also helped to pay for the construction and the maintenance our trail systems.

I am grateful for all of the support the Historic O'Neil Farm has received from dedicated volunteers and supporters. With your support we will continue to preserve this beautiful piece of history. I know I can speak for the rest of the board when I say that we have big plans for the next ten years and we look forward to sharing our plans with you.

Handwritten signature of Susan Schortmann.

Susan Schortmann - Board President.



10th Annual Farm Day

September 16, 2017 from 11am - 3pm



Together with the Duxbury Food and Wine Festival's "Food For Thought" event we are hosting our 10th Annual Farm Day Event on Saturday, September 16.



We look forward to seeing everyone at this free open house event where you can get up close to our calves, see a milking demonstration, enjoy live music by "The Wildcat Bogstompers", and browse local vendor booths (Hornsta Farms Pumpkin Ice Cream is a favorite) and displays. Children will enjoy free crafts and old fashioned games. Some food will be available or you can bring a lunch and blanket and enjoy a picnic while listening to some music.



Join us in the fun from 11:00 am - 3:00 pm. Parking is in our Autumn Avenue field (Rt. 53 to Autumn Ave and down one quarter mile on your left) where you can ride the hay wagon or walk through the pasture or woodland trails to the barnyard. Only handicapped parking we be available down our Winter St. entrance.



For more information and a schedule of demonstrations visit:
www.historiconeilfarm.org or www.duxburyfoodwinefestival.com



Marshfield Fair Preparation



The Farmtastic 4H Club Preps for the Marshfield Fair.

Barnyard Books

In August we hosted over 35 preschool - 6 year old kids for a one-hour long Barnyard Books event. It was an idyllic country scene with children and parents gathered under the O'Neil homestead's trees watching the cattle resting and grazing in the fields while listening to story time featuring books about cows.

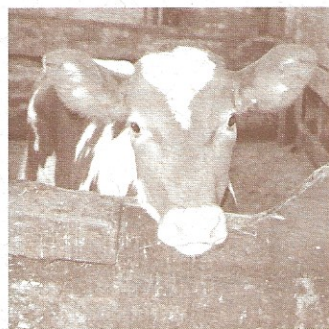


Enjoying Storytime on the Farm.

Calf Corner

Jackie is a stunning new **Geurnsey calf** who is a first calf heifer for dam Jamboree (her dam was Jude) and herd sire Andy. Andy was also born and raised at Historic O'Neil Farm. His dam was Andrea.

Note: dam is a mother, sire is a father.



A beautiful Guernsey Named Jackie Was Born in August.



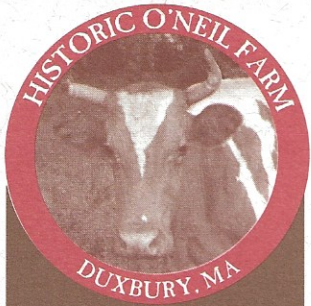
Interested in receiving email updates of events and news? - Sign-up at:

www.historiconeilfarm.org/eneews.html

Historic O'Neil Farm, Inc.
PO Box 2755
Duxbury, MA 02331

Nonprofit Org.
U.S. Postage
PAID
Duxbury, MA
Permit No. 6

Address Service Requested



See inside for:

- Switchel Recipe
- Reflections on the Past 10 Years
- Farm Day 2017
- Preparing for the Marshfield Fair
- Calf Corner
- Barnyard Books Program

Join Us for Farm Day 2017
~ Saturday, September 16, 2017 ~

2017 Annual Fund Continues to Support the Farm

All year long your donations are most welcome. They assist Historic O'Neil Farm programs to expand, the infrastructure to improve and historic research to reveal new and interesting facts about dairying on the South Shore of Massachusetts.

Using the adjacent form, tax deductible donations may be mailed to **PO Box 2755, Duxbury, MA 02331** or you can make an online donation at www.historiconeilfarm.org/donate. Donations large and small go directly to the farm.

Thank you



✂

YES, I am committed to helping Historic O'Neil Farm, Inc. move into the future.

Enclosed is my contribution of:

\$50 \$100 \$250 \$500 Other

Name: _____

Address: _____

email: _____

THANK YOU!